



INFORMATION

We are preparing a **new price list** which will be valid from 1st September 2018. The latest price trends are:

raw material: PLASTICS → ALU ↑ PAP → crude oil: → transport costs: → salaries and wages: → exchange rate: →



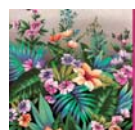
DELISTED ARTICLES

Napkins 3-ply, printed design
(PAP - 100% cellulose) 33 x 33 cm
U052F 15 x 20 pcs



sold out

while stock lasts (ca. 07/2018)



U052F



U098S



U118G



U119G



U049G



U116G



U117G



U120G



U158F



U159F



U160F



U161F



U121G



U162F



U165F



U166F



U163F



U164F



U169F



U170F



U167F



U168F



U191A



U192A



U171F



U190A



U195A



U199A



U193A



U194A



U196A



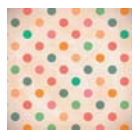
U197A



U201A



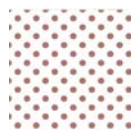
U202A



U203A



U198A



U204A



U205A



U206A



U207A



Baking cup KARO orange
(PAP) Ø 50 x 30 mm

65582 50 x 40 pcs

while stock lasts (06/2018)

→ REPLACED ARTICLES



Napkin 1/8 fold white
 (PAP - 100% cellulose) 33 x 33 cm
87988 8 x 200 pcs
 while stock lasts (06/2018)



Napkin 1/8 fold white
 (PAP - 100% cellulose) 33 x 33 cm
87900 6 x 250 pcs
New

+ NEW ARTICLES

PLASTIC CUTLERY



Spoon single wrapped white
 (PS) 16,5 cm
65016 10 x 100 pcs



Fork single wrapped white
 (PS) 16,5 cm
65017 10 x 100 pcs



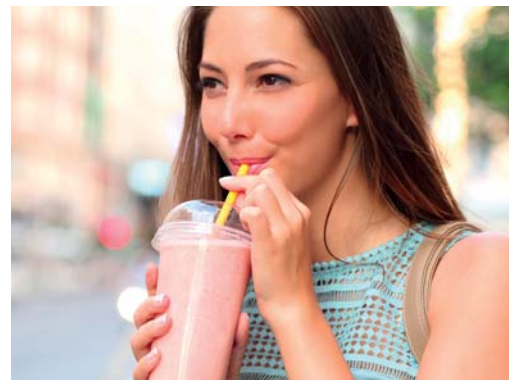
Knife single wrapped white
 (PS) 16,5 cm
65018 10 x 100 pcs



DRINKING STRAWS JUMBO



Drinking straw JUMBO assorted colors
 (PP) Ø 8 mm x 25 cm
66105 200 x 30 pcs (10 x 20 pkg)



BIOPLASTIC DRINKING CUPS (PLA)



Drinking cup -BIO- transparent
0,2 l (PLA) Ø 70 mm
76302 30 x 100 pcs

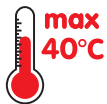


Drinking cup -BIO- transparent
0,3 l (PLA) Ø 95 mm
76303 16 x 70 pcs



Drinking cup -BIO- transparent
0,5 l (PLA) Ø 95 mm
76305 16 x 60 pcs

nature
Bio
compostable



Biomaterial PLA

Polyactic acid PLA is bioplastic made from plant starch, with similar properties as plastics made from crude oil. PLA plastic is biodegradable and compostable, hence much more friendly to nature.

Bioplastic drinking cups PLA

Cups are suitable for cold drinks up to 40 °C, are transparent and have a high gloss. They are used in the HoReCa sector, on festivals, concerts and for private garden parties.



SOUP BOWLS (PP)



74300



Soup bowl white
350 ml (PP) Ø 12,7 cm
74313 9 x 50 pcs

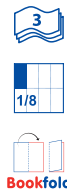


74300



Soup bowl white
750 ml (PP) Ø 12,7 cm
74317 9 x 50 pcs





Napkin 1/8 fold white
(PAP - 100% cellulose) 33 x 33 cm
87900 6 x 250 pcs



Napkins 1/8 fold red
(PAP - 100% cellulose) 33 x 33 cm
87901 6 x 250 pcs



Napkins 1/8 fold yellow
(PAP - 100% cellulose) 33 x 33 cm
87905 6 x 250 pcs



Napkins 1/8 fold bordeaux
(PAP - 100% cellulose) 33 x 33 cm
87908 6 x 250 pcs



Napkin 1/8 fold cream
(PAP - 100% cellulose) 33 x 33 cm
87909 6 x 250 pcs



Napkins 1/8 fold yellow green
(PAP - 100% cellulose) 33 x 33 cm
87917 6 x 250 pcs

